



Important PLAY NOTES - Kindergartners

Please read carefully and post at home as a reminder.

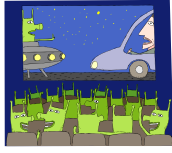
Wednesday, February 28: Rehearsal @ the Theater

- **If your child has an Elementary sibling**, arrive at the theater between 8:30-8:45. The theater is at 1601 Civic Drive, Walnut Creek. *Walk your children to the Stage Door and connect with a Staff person.* If you have an emergency while we're at the theater, please contact the Children's House classroom.
- **All other Kindergartners need to arrive at school by 7:40.** We will be leaving for the theater no later than 8am to enter the theater promptly at 9am.
- Kindergartners **will not need their costumes @ the theater.** Costumes will go home today.

Thursday, February 29: *The Play* – **SCHOOL CLOSSES AT 6:00.**

- * **Pick up your child from school as early as possible** after lunch, **no later than 4:30.** (*4:00 is much better* so our Staff can get to the theater on time.) Note your anticipated pick-up time on the daily sign-in sheet in the morning. Your child, and our Staff, will need plenty of rest, and an early, light meal before the performance.
- * **Parking @ the theater:** There is a parking garage beside the theater. Avoid parking tickets. They are very serious about only oversized vehicles parking in the front spaces. Our event may be considered Event Parking, where you pay the fee upon entry. If not, you pay before returning to your car.
- * **Arrival @ the theater: Kindergartners need to arrive in costume, without makeup promptly at 6:30** (unless otherwise noted to you) to allow volunteers adequate time to do your child's make-up. *Please walk your child to the Stage Door, accessible from the garage, where you'll be met by Brie.* After the performance, pick your child up at the Stage Door.
- * **No Parents are permitted backstage** at the theater. Please take pictures before dropping your child off at the Stage Door.
- * **Additional tickets** may be available at the Box Office. We recommend calling now.

See additional important information on the other side of this sheet



Seating / Grace & Courtesy

Above all, please be courteous to other persons in the audience, and the actors.

Kindergarten families: please sit 4-5 rows behind the front row.
Kindergartners become easily distracted when their families sit nearby.

Families with very young children: We encourage you to sit in aisle seats.
If your child becomes upset and you need to leave the theater,
there are 2 monitors to see the Play in the hallway outside.

Saved seats: When you enter the theater at 6:30, you may notice seats that have been saved. These belong to our Parent Volunteers who are doing makeup backstage and cannot enter the theater at 6:30 with the rest of the audience.

- * There is **NO FLASH PHOTOGRAPHY or video taping** of the Play. This is very distracting to the actors! We have the Play professionally recorded and will let you know when it is available.
- * **Cell phones:** Please turn them off or to vibrate when you enter the theater.
- * **The end of the night:** *Live theater is unpredictable!* We expect to be done between 9-9:15 p.m. We take the children back to the Stage Door immediately after the end of the show. Please come for them soon; they are very anxious to see you!

Friday, March 1: *The Celebration!*

- * It's been a late night! Kindergarten students **may arrive at school by 9 a.m.** (instead of 8:30).
- * During Circle time, children will share and celebrate their Play experience, hard work, and accomplishment.